



© Copyright Paragon Software (Smart Handheld Devices Division)
Dolgoprudny, Moscow region, Russia, 2002

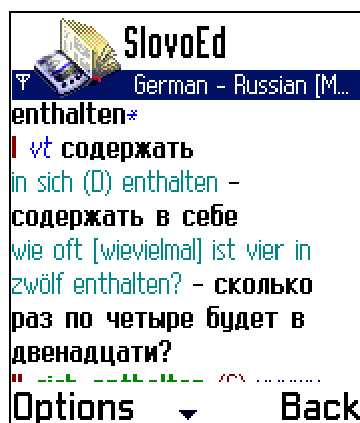
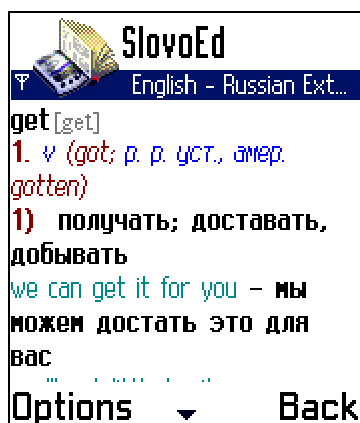
The manual modified on November 22, 2002

About the program

"**SlovoEd**" is a multi-language dictionary for NOKIA 7650.

Advantages of the program are:

- Great number of word entries
- Low memory consumption
- The possibility to install several language pairs
- Convenient interface and color formatting of word entries



- Search history (last words that you searched), you can see any word from the history again at any time
- Wildcard search
- Transcription support.

High data compression ratio for dictionaries with a high access rate is available due to special technology developed by **Paragon Software (SHDD)** (<http://www.penreader.com>).

Information about all dictionaries that we develop is available at www.penreader.com/Nokia_7650/SlovoEd.html.

Demo-version limitations:

The more you use an unregistered dictionary, the more you see a message about its registration procedure.

Installation

Attention!

- After "**SlovoEd**" installation it will be impossible to hard reset your device with standard phone code *#7470#! To reset your Nokia 7650, you should uninstall "**SlovoEd**".
- Because of the Nokia 7650 OS, it's impossible to uninstall only one dictionary. If you want to change the list of dictionaries, uninstall all SlovoEd components, and reinstall dictionaries needed.
- Don't forget to perform backup of all your data before installation of a new program (including "**SlovoEd**")! It will help you to avoid casual data loss.

To install "**SlovoEd**" from you computer via infrared, use PC Suite program, which is supplied with Nokia 7650 on CD-ROM. When the connection is established,

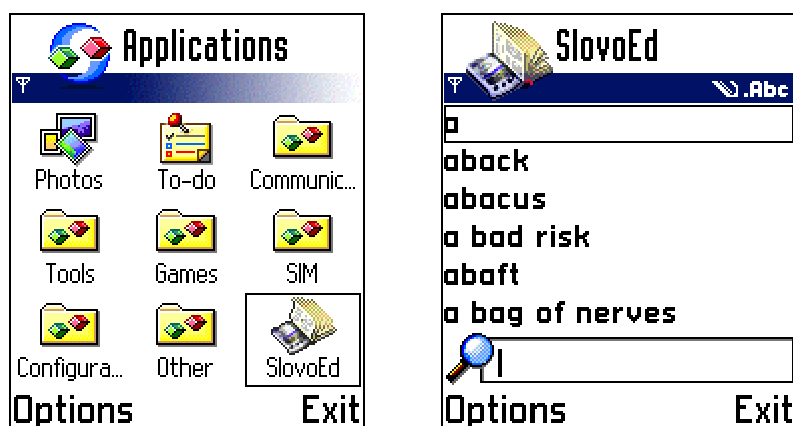
1. Run the SlovoEd_XXXX.sis file from your desktop computer.
2. Follow the instructions of the installation program.
3. First time you start "SlovoEd" program, you may need to restart your device in order to activate special font for transcriptions. You can skip this step and restart device later.

You can install the "**SlovoEd**" program with several dictionaries. To do that you should start all the dictionary files one after another. Then you will be able to use several dictionaries simultaneously (for example, Spanish-English and English-German) and change the dictionaries by the **Options > Choose dictionary** operation.

To uninstall "**SlovoEd**" use standard operations. Open **Tools > Manager** from the main menu. Choose the dictionary, and through **Options > Remove**, uninstall corresponding component. To restore default fonts you should restart your device (This operation is strongly recommended before the next "SlovoEd" installation!!!)

Using "SlovoEd"

The "**SlovoEd**" icon is placed in main menu of your device. After starting the SlovoEd program the screen of your communicator will appear as follows:



There is an edit field at the bottom of the SlovoEd window. Using phone keypad, you can type there a word that you want to translate. To get translation of the word you should press joystick. If the dictionary contains the word that you entered, you will see translation of the word in the translation field.

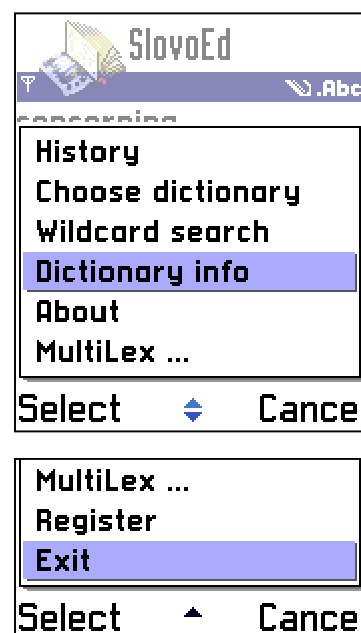
You can look through the list of words contained in the dictionary by moving joystick Up and Down.

The elements of the program interface are shown in the pictures below:



1. Edit field.
2. List of words available in the dictionary.
3. Found result.
4. Transcription.
5. Translation of the word entry. All the meanings of translation are numbered.
6. Translation field.
7. Title of the active dictionary.
8. Program name.
9. **Options** menu from the main window contains following elements:

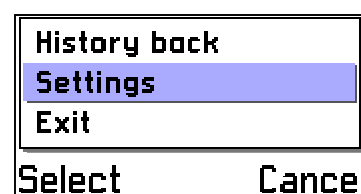
- **History.** In this item you can look through the list of the words that you searched before and to select one if necessary.
- **Choose dictionary** menu item allows you to set any of available dictionaries as an active one.
- **Wildcard search.** You can search for doubtful words using a mask. Question-mark (?) could be used instead of single character and asterisk (*) instead of any character or group of characters.
- **Dictionary info.** Title of the active dictionary and registration info.
- **About.** Information about program version.
- **MultiLex...** If your active dictionary is one from MediaLingua Company, you can view special info here.
- **Register.** In this item you can register your copy of the dictionary databases.
- **Exit.** Exit from the dictionary.



10. **Exit** menu. Exit from the dictionary.

11. **Options** menu from translation window contains following elements:

- **History back.** One word back item.
- **Settings.** In this item you can tune some view options such as **Text size** (**Small**, **Normal** or **Big**), and **Full screen** mode (**Yes** or **No**).
- **Exit.** Exit from the dictionary.



12. **Back** menu. Return to the main window.

You can get translation of any word from the translation field. If you want to get translation of a word from the translation field, set cursor on it and press joystick. The dictionary will show you translation of that word.

Support and updates service

If you have any questions concerning dictionaries SlovoEd and MultiLex please contact technical support service of Paragon Software (SHDD): nokia_support@penreader.com
Tel: (095) 408-61-79, 408-76-77
(Operation time of technical support line is 11.30 - 19.00 Moscow time)*
Web: <http://www.penreader.com>

How to buy SlovoEd

You can find detailed information about buying procedure on our web site:
http://www.penreader.com/Nokia_7650/SlovoEd/buy.html
Please contact us if you have any problem with placing your on-line order:
911@penreader.com

Dear customers!
We will be glad to get your suggestions and comments that help
us to increase our programs quality.
Thanks you for your comments and suggestions!

* **When calling from outside Russia, please consider time shifts:** Moscow is 11 hours ahead of San-Jose, 8 hours ahead of New York, 3 hours ahead of London, 2 hours ahead of Munich and Paris, 6 hours behind Tokyo. Moscow office operation hours are from 11.00 till 19.00 by Moscow local time.

